

POLO TRACE II GOLF COURSE

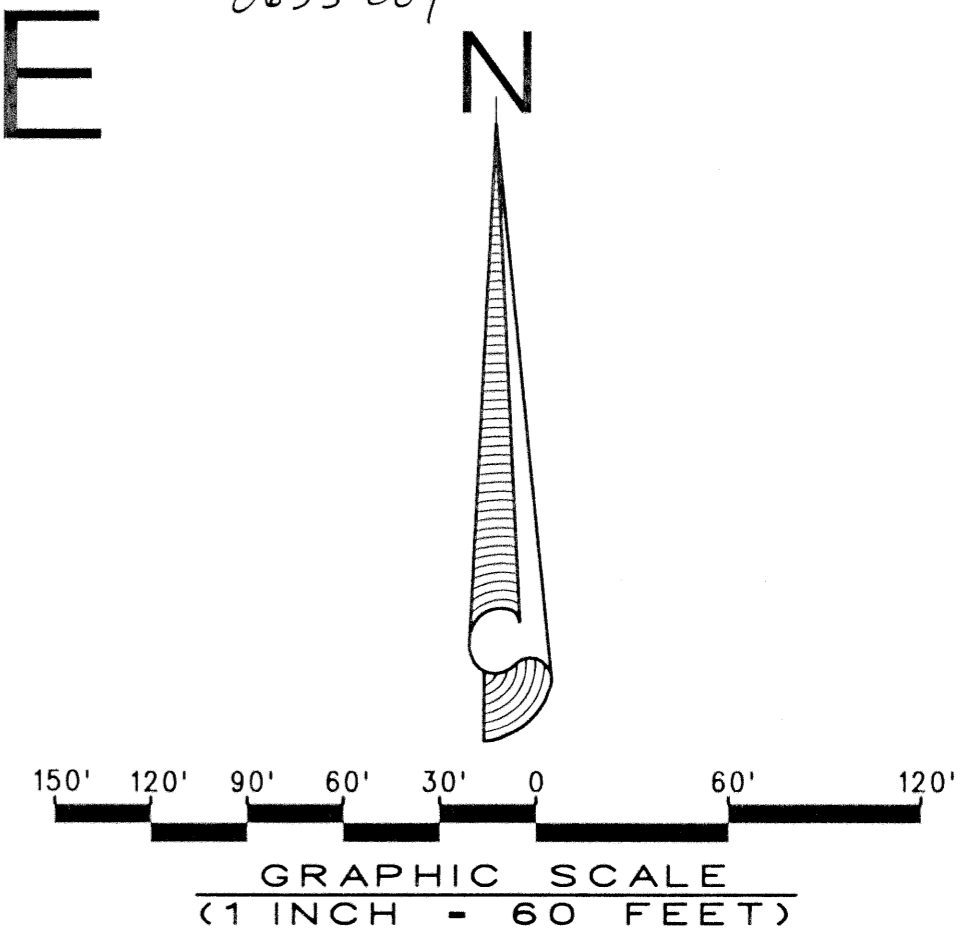
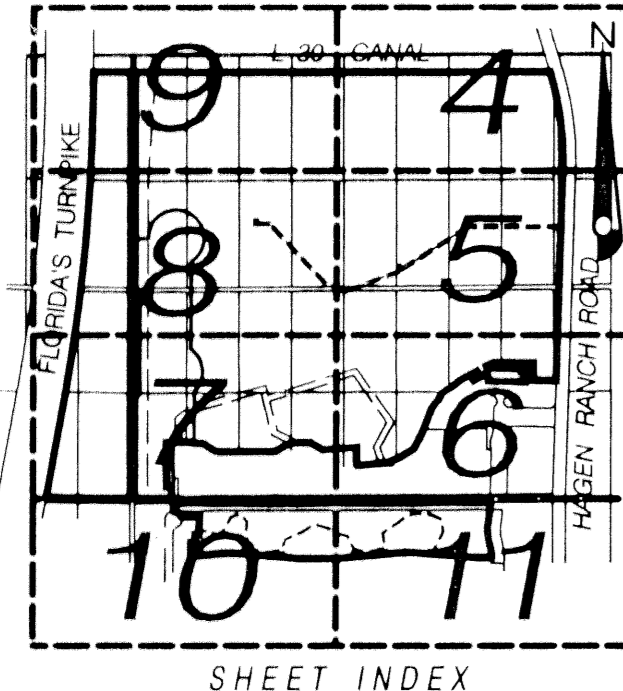
0633-004

164

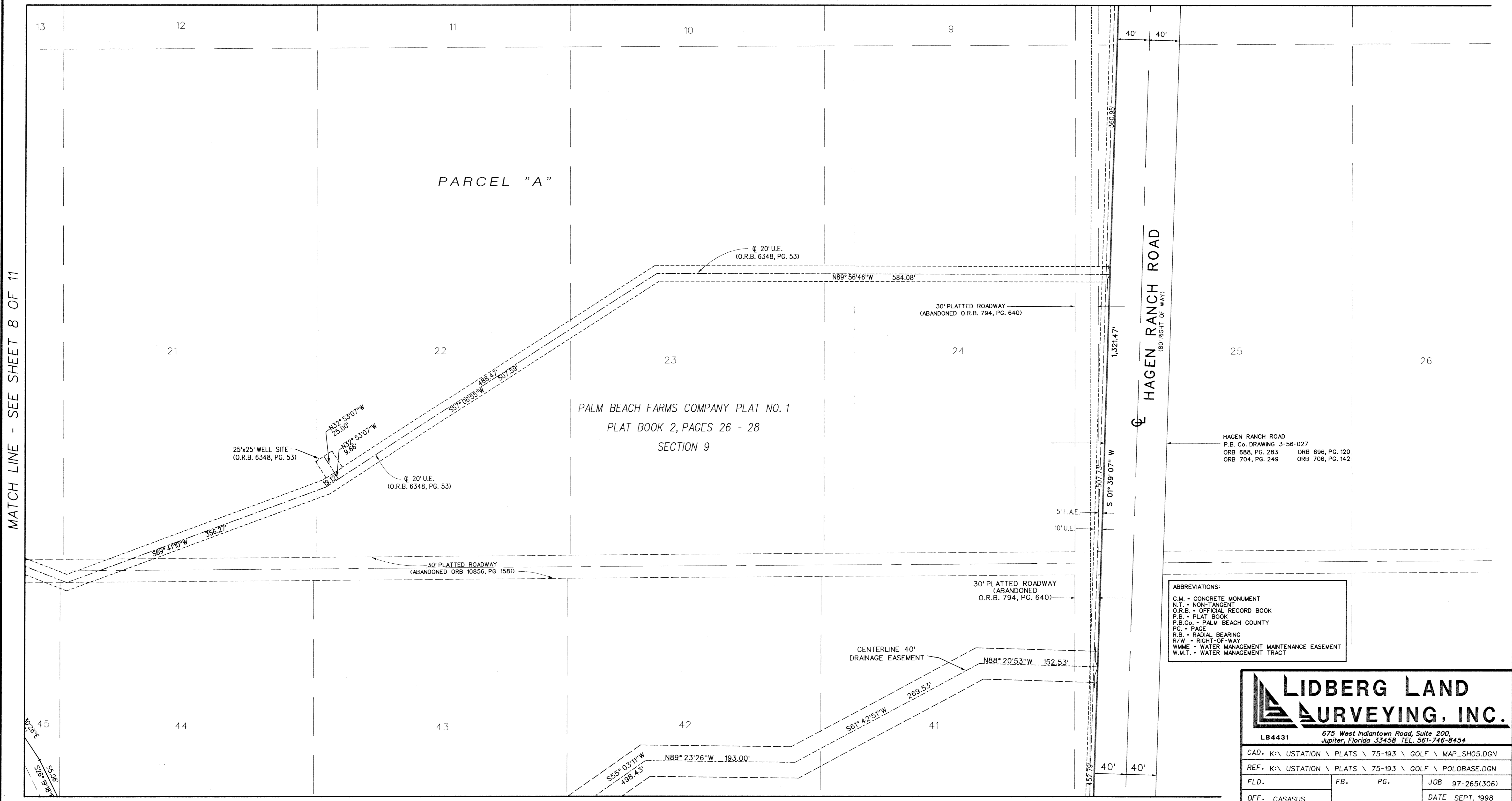
(A PART OF POLO TRACE II P.U.D.)

BEING A REPLAT OF A PORTION OF PALM BEACH FARMS COMPANY PLAT NO. 1,
 ACCORDING TO THE PLAT THEREOF, AS RECORDED IN PLAT BOOK 2, PAGES 26 - 28,
 ALSO BEING A REPLAT OF A PORTION OF POLO TRACE II, PLAT NO. 1
 ACCORDING TO THE PLAT THEREOF, AS RECORDED IN PLAT BOOK 75, PAGES 193 - 204,
 PUBLIC RECORDS OF PALM BEACH COUNTY, FLORIDA.

LYING IN SECTIONS 8 AND 9, TOWNSHIP 46 SOUTH, RANGE 42 EAST
 PALM BEACH COUNTY, FLORIDA
 JUNE, 2000 SHEET 5 OF 11



MATCH LINE - SEE SHEET 4 OF 11



MATCH LINE - SEE SHEET 8 OF 11

MATCH LINE - SEE SHEET 6 OF 11

ABBREVIATIONS:
 C.M. - CONCRETE MONUMENT
 N.T. - NON-TANGENT
 O.R.B. - OFFICIAL RECORD BOOK
 P.B. - PLAT BOOK
 P.B.Co. - PALM BEACH COUNTY
 P.C. - PAGE
 R.B. - RADIAL BEARING
 R/W - RIGHT-OF-WAY
 W/M - WATER MANAGEMENT MAINTENANCE EASEMENT
 W.M.T. - WATER MANAGEMENT TRACT

LIDBERG LAND SURVEYING, INC.
 675 West Indiantown Road, Suite 200,
 Jupiter, Florida 33458 TEL. 561-746-8454

CAD. K:\USTATION \ PLATS \ 75-193 \ GOLF \ MAP_SH05.DGN	REF. K:\USTATION \ PLATS \ 75-193 \ GOLF \ POLOBASE.DGN
FLD.	FB. PG. JDB 97-265(306)
OFF. CASASUS	DATE SEPT. 1998
CKD. D.C.L.	SHEET 5 OF 11 DWG. D97-265P

SUBDIVISION POLO TRACE II
 SHEET 5 OF 11
 PLAT NO. 1
 FLOOD MAP #200 A
 ZONING PUD
 ZIP CODE 33444
 FILE # 459
 PUD NAME POLO TRACE II